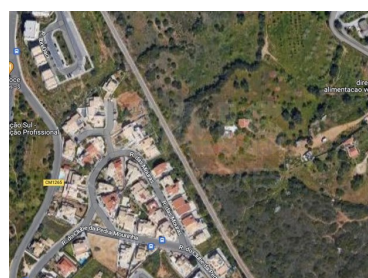




## Portimão - Land



13200

Area (m²)



15640

Land Area (m²)



1 100 000 €

(EUR €)

## Land in Portimão with 15,640m2 and ruin

Land plot in Alvor (Cabeço de Mocho) with an area of 15,640m2 and a ruin of 45m2.

Property located in the Cabeça do Mocho area, between urbanizations of multi-family buildings and houses.

According to the Consultation with the Municipal Master Plan in force, the building is part (about 13200m2) in Zone 1 - Urban Expansion Zone and the rest (about 1800m2) in Zone 2 - Urban Zone from where its constructive capacity comes from.

Alvor is a small town that is often overshadowed by Portimão, in Algarve, with most tourists preferring to spend their holidays in the city. However, Alvor has several activities to do and things to visit, such as spending the day on the beach, visiting Alvor castle, sailing, Alvor footbridge, kayaking


**João Coimbra**

+351939943024 <sup>2</sup>

joao.coimbra@casaprestige.pt

T +351 939943024 <sup>2</sup> · E geral@casaprestige.pt

Avenida do Atlântico, n. 16 - 14º Andar Escritório 8, 1990-019 Lisboa  
AMI 16783

<sup>1</sup> (Call to national fixed network) | <sup>2</sup> (Call to national mobile network)



53729

Reference

Scan the QR code to view the property



in the Alvor estuary, golf and mini-golf, walking in the Serra de Monchique, among many other activities, restaurants and supermarkets.

## Property Features

- Proximity: Airport, Mountain, Beach, Golf course, Shopping, Restaurants, City, Open field, Hospital, Pharmacy, Public Transport, Schools, Public Swimming Pools, Playground
- Built year: 1965
- Main drainage
- Parking space
- Solar orientation: North, South, East, West
- Garden
- Views: Countryside views, Village view, Urbanization view, Garden view
- Quiet Location
- Energetic certification: Exempt



**João Coimbra**

+351939943024 <sup>2</sup>

joao.coimbra@casaprestige.pt

**T +351 939943024 <sup>2</sup> · E geral@casaprestige.pt**

**Avenida do Atlântico, n. 16 - 14º Andar Escritório 8, 1990-019 Lisboa  
AMI 16783**

<sup>1</sup> (Call to national fixed network) | <sup>2</sup> (Call to national mobile network)